

UTP CAT5E & CAT6 & CAT6A PATCH PANEL

Part No.	Description
SX-NPP-UB2402W-180	UTP blank panel 24Port 09 Type



Part No.	Description
SX-NPP-U62412W-030	1U 180°patch panel Cat6 UTP 24PORT(Aluminum)



Part No.	Description
SX-NPP-U62412W-220	1U 180°patch panel Cat6 UTP 24PORT with LED light
SX-NPP-UA2412W-220	1U 180°patch panel Cat6A UTP 24PORT with LED light



Part No.	Description
SX-NPP-U62412W-070	180°UTP Patch Panel,Cat.6 24 Port with D-ring Cable manager
SX-NPP-UA2412W-070	180°UTP Patch Panel,Cat.6A 24 Port with D-ring Cable manager



Part No.	Description
SX-NPP-UB2402W-080	UTP Front-Mount/Dismount designed modular type Blank Panel , without shutter, with Back Cable manager Bar.



Part No.	Description
SX-NPP-UB2402W-090	UTP Front-Mount/Dismount designed modular type Blank Panel , with shutter, with Back Cable manager Bar.



Part No.	Description
SX-NPP-U52412W-010	1U 180°patch panel Cat5e UTP 24PORT with cable manager
SX-NPP-U62412W-010	1U 180°patch panel Cat6 UTP 24PORT with cable manager
SX-NPP-UA2412W-010	1U 180°patch panel Cat6A UTP 24PORT with cable manager



FTP CAT5E & CAT6 & CAT6A PATCH PANEL

Part No.	Description
SX-NPP-F62412W-060	90°FTP patch panel Cat6 24Port
SX-NPP-FA2412W-060	90°FTP patch panel Cat6A 24Port



Part No.	Description
SX-NPP-FB2402W-330	180° FTP Blank Patch Panel 24 port



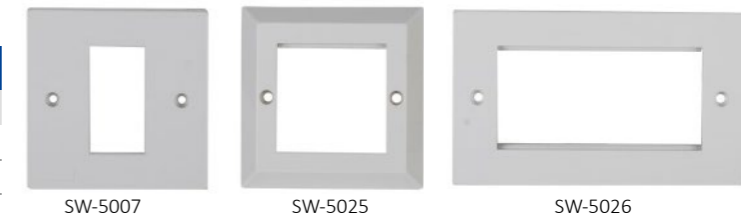
USA TYPE SERIES

Part No.	Description
SX-5101	Single port face plate,US type
SX-5102	Double ports face plate,US type
SX-5103-I	Three ports face plate with icon,US type
SX-5104-I	Four port face plate with icon,US type



UK TYPE SERIES

Part No.	Description
SX-5007	Face plate,UK style,1 port,86x86mm
SX-5025	Face plate,UK style,2 port,86x86mm
SX-5026	Face plate,UK style,4 port,146x86mm



UK TYPE SERIES

Part No.	Description
SX-5055	1/4 blank bezel 50x12.5mm
SX-5056	1/2 blank bezel 50x25mm
SX-5071	Beveled keystone adapter 25x50mm



■ BASIC TYPE SERIES

Part No.	Description
SX-NFP-0011A0-010	FacePlate 1Port
SX-NFP-0021A0-010	FacePlate 2Port
SX-NFP-0041A0-010	FacePlate 4Port



■ EUROPE TYPE SERIES

Part No.	Description
SX-NFP-0011A0-020	Face plate,UK style,1 port,86x86mm
SX-NFP-0021A0-020	Face plate,UK style,2 port,86x86mm



CAT5E & CAT6 UK MODULES

UK type Cat5e/Cat6 RJ45 Keystone Jack/Module(50*25mm)

- Suitable for 146 & 86 faceplate.
- Krone IDC Termination, 90 degree.

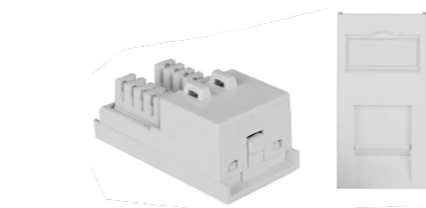
Technical Details:

- Insertion Life: 750 mating Cycles.
- Plug retention force: 89N
- IDC Accpet: 22-26 AWG Solid Wire

Part No.	Description
SX-1024B-C5	UK type cat5e UTP RJ45 Module, 25*38mm
SX-1024B-C6	UK type cat6 UTP RJ45 Module, 25*38mm



Part No.	Description
SX-1025C-C5	UK type cat5e UTP RJ45 Module, 25*50mm
SX-1025C-C6	UK type cat6 UTP RJ45 Module, 25*50mm

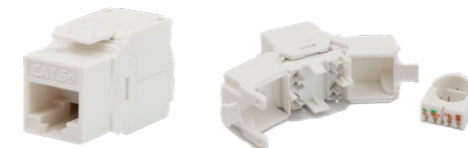


CAT5E&CAT6&CAT6A FTP KEYSTONE JACKS

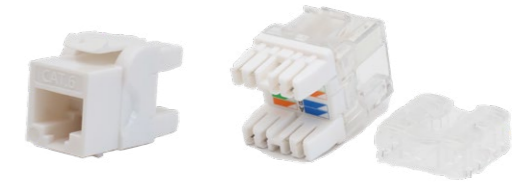
Part No.	Description
SX-NKJ-F6110-080	Cat6 Keystone Jacks 180°FTP Tooless (Up to Down)
SX-NKJ-FA110-080	Cat6A Keystone Jacks 180°FTP Tooless (Up to Down)



Part No.	Description
SX-NKJ-U5110-070	Cat5e Keystone Jacks 180°UTP Tooless (Up to Down)
SX-NKJ-U6110-070	Cat6A Keystone Jacks 180°UTP Tooless (Up to Down)
SX-NKJ-UA110-070	



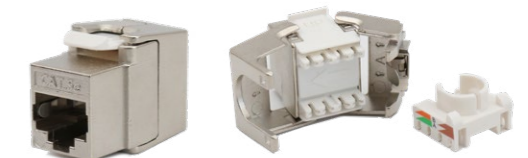
Part No.	Description
SX-NKJ-U6110-020	Cat6 Keystone jacks 180°UTP Punch Down
SX-NKJ-UA110-020	Cat6A Keystone jacks 180°UTP Punch Down



Part No.	Description
SX-NKJ-U6110-050	Cat6 Keystone jacks 180°UTP tooless(Left to Right)
SX-NKJ-UA110-050	Cat6A Keystone jacks 180°UTP tooless(Left to Right)



Part No.	Description
SX-NKJ-F6110-060	Cat6 Keystone jacks 180°FTP tooless(Left to Right)
SX-NKJ-FA110-060	Cat6A Keystone jacks 180°FTP tooless(Left to Right)



Part No.	Description
SX-NKJ-U6110-100	Cat6 Keystone jacks 180°UTP tooless w/LED Light(Left to Right)
SX-NKJ-UA110-100	Cat6A Keystone jacks 180°UTP tooless w/LED Light(Left to Right)



Part No.	Description
SX-NKJ-U6110-110	Cat6 Keystone jacks 180°UTP w/LED Light Punch down
SX-NKJ-UA110-110	Cat6A Keystone jacks 180°UTP w/LED Light Punch down

