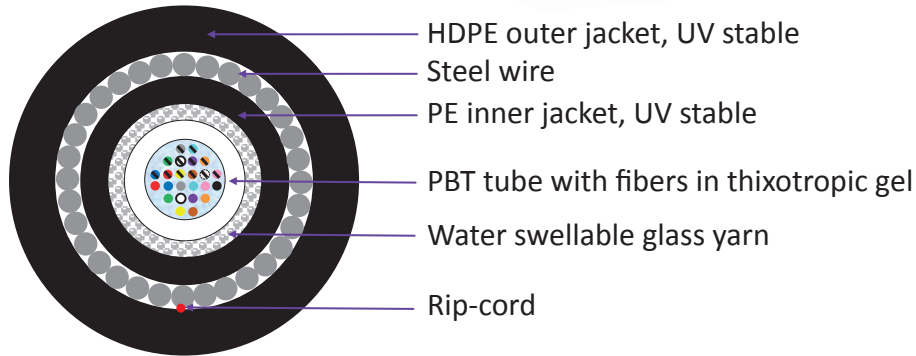
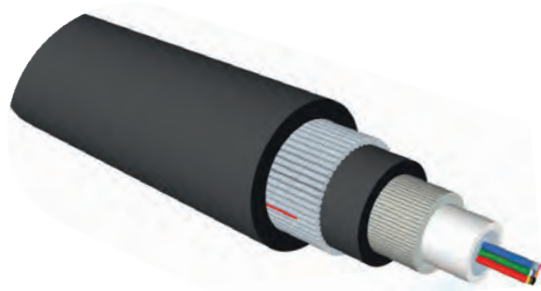


DESCRIPTION:

The cable consists of a single central tube containing coloured 250 µm fibres; around the tube is a layer of the water swellable glass yarns that act as tensile strength members; over the strength members is an inner jacket from PE. Under the outer jacket are steel wires that act as armoring; the outer jacket is made from the HDPE. The cable has excellent rodent protection and is suitable for direct laying into the soil.



Outdoor SWA Armoured Unitube Cable

	Ordering Code	Fiber Type	Nominal Diameter mm	Fiber Count	Weight kg/km
SINGLEMODE	SM-O-CTS-2(1x3,0)LTGPWP-D-BK	G.652.D	9.9	2	152
	SM-O-CTS-2(1x3,0)LTGPWP-DA1-BK	G.652.D/G.657.A1	9.9	2	152
	SM-O-CTS-2(1x3,0)LTGPWP-A1-BK	G.657.A1	9.9	2	152
	SM-O-CTS-2(1x3,0)LTGPWP-A2-BK	G.657.A2	9.9	2	152
	SM-O-CTS-2(1x3,0)LTGPWP-B3-BK	G.657.B3	9.9	2	152
MULTIMODE	SM-O-CTS-2(1x3,0)LTGPWP-OM1-BK	OM1	9.9	2	152
	SM-O-CTS-2(1x3,0)LTGPWP-OM2-BK	OM2	9.9	2	152
	SM-O-CTS-2(1x3,0)LTGPWP-OM3-BK	OM3	9.9	2	152
	SM-O-CTS-2(1x3,0)LTGPWP-OM4-BK	OM4	9.9	2	152
SINGLEMODE	SM-O-CTS-4(1x3,0)LTGPWP-D-BK	G.652.D	9.9	4	152
	SM-O-CTS-4(1x3,0)LTGPWP-DA1-BK	G.652.D/G.657.A1	9.9	4	152
	SM-O-CTS-4(1x3,0)LTGPWP-A1-BK	G.657.A1	9.9	4	152
	SM-O-CTS-4(1x3,0)LTGPWP-A2-BK	G.657.A2	9.9	4	152
	SM-O-CTS-4(1x3,0)LTGPWP-B3-BK	G.657.B3	9.9	4	152
MULTIMODE	SM-O-CTS-4(1x3,0)LTGPWP-OM1-BK	OM1	9.9	4	152
	SM-O-CTS-4(1x3,0)LTGPWP-OM2-BK	OM2	9.9	4	152
	SM-O-CTS-4(1x3,0)LTGPWP-OM3-BK	OM3	9.9	4	152
	SM-O-CTS-4(1x3,0)LTGPWP-OM4-BK	OM4	9.9	4	152

Ordering Code	Fiber Type	Nominal Diameter mm	Fiber Count	Weight kg/km
SM-O-CTS-6(1x3,0)LTGPWP-D-BK	G.652.D	9.9	6	152
SM-O-CTS-6(1x3,0)LTGPWP-DA1-BK	G.652.D/G.657.A1	9.9	6	152
SM-O-CTS-6(1x3,0)LTGPWP-A1-BK	G.657.A1	9.9	6	152
SM-O-CTS-6(1x3,0)LTGPWP-A2-BK	G.657.A2	9.9	6	152
SM-O-CTS-6(1x3,0)LTGPWP-B3-BK	G.657.B3	9.9	6	152
SM-O-CTS-6(1x3,0)LTGPWP-OM1-BK	OM1	9.9	6	152
SM-O-CTS-6(1x3,0)LTGPWP-OM2-BK	OM2	9.9	6	152
SM-O-CTS-6(1x3,0)LTGPWP-OM3-BK	OM3	9.9	6	152
SM-O-CTS-6(1x3,0)LTGPWP-OM4-BK	OM4	9.9	6	152

SINGLEMODE

MULTIMODE

Ordering Code	Fiber Type	Nominal Diameter mm	Fiber Count	Weight kg/km
SM-O-CTS-16(1x3,0)LTGPWP-D-BK	G.652.D	9.9	16	152
SM-O-CTS-16(1x3,0)LTGPWP-DA1-BK	G.652.D/G.657.A1	9.9	16	152
SM-O-CTS-16(1x3,0)LTGPWP-A1-BK	G.657.A1	9.9	16	152
SM-O-CTS-16(1x3,0)LTGPWP-A2-BK	G.657.A2	9.9	16	152
SM-O-CTS-16(1x3,0)LTGPWP-B3-BK	G.657.B3	9.9	16	152
SM-O-CTS-16(1x3,0)LTGPWP-OM1-BK	OM1	9.9	16	152
SM-O-CTS-16(1x3,0)LTGPWP-OM2-BK	OM2	9.9	16	152
SM-O-CTS-16(1x3,0)LTGPWP-OM3-BK	OM3	9.9	16	152
SM-O-CTS-16(1x3,0)LTGPWP-OM4-BK	OM4	9.9	16	152

SM-O-CTS-8(1x3,0)LTGPWP-D-BK	G.652.D	9.9	8	152
SM-O-CTS-8(1x3,0)LTGPWP-DA1-BK	G.652.D/G.657.A1	9.9	8	152
SM-O-CTS-8(1x3,0)LTGPWP-A1-BK	G.657.A1	9.9	8	152
SM-O-CTS-8(1x3,0)LTGPWP-A2-BK	G.657.A2	9.9	8	152
SM-O-CTS-8(1x3,0)LTGPWP-B3-BK	G.657.B3	9.9	8	152
SM-O-CTS-8(1x3,0)LTGPWP-OM1-BK	OM1	9.9	8	152
SM-O-CTS-8(1x3,0)LTGPWP-OM2-BK	OM2	9.9	8	152
SM-O-CTS-8(1x3,0)LTGPWP-OM3-BK	OM3	9.9	8	152
SM-O-CTS-8(1x3,0)LTGPWP-OM4-BK	OM4	9.9	8	152

SINGLEMODE

MULTIMODE

SM-O-CTS-24(1x3,0)LTGPWP-D-BK	G.652.D	9.9	24	152
SM-O-CTS-24(1x3,0)LTGPWP-DA1-BK	G.652.D/G.657.A1	9.9	24	152
SM-O-CTS-24(1x3,0)LTGPWP-A1-BK	G.657.A1	9.9	24	152
SM-O-CTS-24(1x3,0)LTGPWP-A2-BK	G.657.A2	9.9	24	152
SM-O-CTS-24(1x3,0)LTGPWP-B3-BK	G.657.B3	9.9	24	152
SM-O-CTS-24(1x3,0)LTGPWP-OM1-BK	OM1	9.9	24	152
SM-O-CTS-24(1x3,0)LTGPWP-OM2-BK	OM2	9.9	24	152
SM-O-CTS-24(1x3,0)LTGPWP-OM3-BK	OM3	9.9	24	152
SM-O-CTS-24(1x3,0)LTGPWP-OM4-BK	OM4	9.9	24	152

SM-O-CTS-12(1x3,0)LTGPWP-D-BK	G.652.D	9.9	12	152
SM-O-CTS-12(1x3,0)LTGPWP-DA1-BK	G.652.D/G.657.A1	9.9	12	152
SM-O-CTS-12(1x3,0)LTGPWP-A1-BK	G.657.A1	9.9	12	152
SM-O-CTS-12(1x3,0)LTGPWP-A2-BK	G.657.A2	9.9	12	152
SM-O-CTS-12(1x3,0)LTGPWP-B3-BK	G.657.B3	9.9	12	152
SM-O-CTS-12(1x3,0)LTGPWP-OM1-BK	OM1	9.9	12	152
SM-O-CTS-12(1x3,0)LTGPWP-OM2-BK	OM2	9.9	12	152
SM-O-CTS-12(1x3,0)LTGPWP-OM3-BK	OM3	9.9	12	152
SM-O-CTS-12(1x3,0)LTGPWP-OM4-BK	OM4	9.9	12	152

SINGLEMODE

MULTIMODE